



# Sanford School



## Introduction

Sanford has very kind, comfortable, and relaxed environment. Sanford students work very hard, but this is not a pressure cooker environment. Students are appropriately challenged and pushed, but Sanford students are not so stressed out that be ruined their childhood. Similarly, while the school is a college prep school that prepares students for the most elite colleges in the nation, Sanford does not project an elitist air that one finds at many independent schools. In Sanford community, kindness and respect are taught and valued; and as a result, students and families feel very welcomed from the moment they arrive on campus. 100-acre campus is a unique setting and the ultimate physical space for learning. Sanford’s program focuses on fostering creativity and appropriate risk-taking. Award-winning visual and performing arts programs are hallmarks of the Sanford experience. The thoughtful work students do in the studio and on stage also leads to creative problem solving in the classroom. The school belief that every student, when appropriately engaged, has the talent to be successful makes all the difference.



## Extracurriculars

Sports have baseball, basketball, softball, tennis, ice hockey, cheerleading, cross country, football, golf, hockey, athletics, wrestling, swimming and volleyball. And other activities like Academic Contest, Math League, National Honor Society, Science Olympiad, Model UN, Student Council, etc.

## Universities Admitted

100% of our students go on to very fine universities and colleges like Harvard University, Princeton University, Yale University, Massachusetts Institute of Technology, Cornell University, Duke University, Stanford University, etc.

## 2015-2016 Expenses

9th grade: \$56,265/Year 8th grade: \$54,555/Year (include tuition and school fees, food and accommodation, insurance and management.)

## Basic Figures

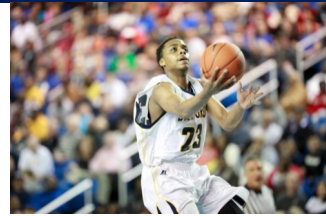
Website	<a href="http://www.sanfordschool.org">www.sanfordschool.org</a>
School Address	6900 Lancaster Pike, Hockessin, DE 19707
School Type	Co-ed
Year Founded	1930
Grades Offered	Grades Prekindergarten - 12
Enrollment	585 (16 International Students)
Teacher Student Ratio	1:12
Average Class Size	15
ESL Courses Offered	None
# of AP Courses Offered	16
Average SAT Score	1780
Semesters started	September (trimester)
Application Deadline	May 31







# 山佛学校 Sanford School



## 学校简介

山佛学校Sanford School是特拉华州一个著名男女混校的大学预科高中，于1930年建校，占地 100 英亩。风景秀丽的校园坐落在最富裕的厚卡森区的一个小山坳里，离费城40分钟，巴尔的摩45分钟，离华盛顿2个小时，离纽约3个小时。校园内充满着友好、舒适、放松的氛围。充满挑战的学术课程让学生可以进入任何一个大学，学校采用个性化小班教学，平均每班人数为12人，师生比为1:9，70%的学校老师有硕士以上高等学位。学校非常重视对学生的创造性和冒险精神的培养，项目繁多的社区服务和课外活动让山佛学校的学生成为优秀学生。山佛学校设有16 门 AP 课程和很多荣誉课程。山佛学校的学生的SAT分比国家平均水平高出很多，SAT平均在1570-1950。



## 课外活动:

运动项目有棒球、篮球、垒球、网球、冰球、啦啦队、越野、足球、高尔夫、曲棍球、田径、摔跤、游泳和排球；社团有州际学术比赛、数学联盟、国家荣誉学生协会、科学奥赛、模拟联合国、学生会等。

## 毕业去向:

学校的升学率100%，毕业学生相当一部分考上美国长青藤学校如哈佛大学、普林斯顿大学、耶鲁大学、麻省理工学院、康耐尔大学、杜克大学、斯坦福大学等。

## 基本信息

学校网站:	<a href="http://www.sanfordschool.org">www.sanfordschool.org</a>
学校地址:	6900 Lancaster Pike, Hockessin, DE 19707
学校性质:	男女同校，寄宿在美国人家里
成立时间:	1930年
年级设置:	幼儿园-12 年级
在校人数:	585 (16名国际学生)
师生比例:	1:12
平均班级人数:	15
ESL 课程:	无
AP课程:	16门
SAT平均分:	1780
开学时间:	9月 (三学期制)
申请截止日期:	5月31日

## 2015-2016年费用:

九年级: \$56,265/年, 八年级: \$54,555/年 (包括学费、学杂费、食宿费、医保和管理费。注: 以学校最后发布为准。)

